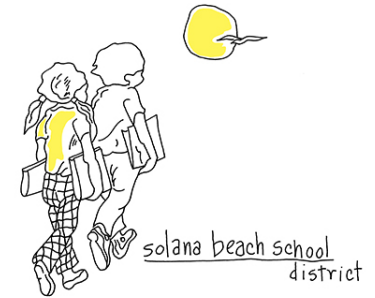
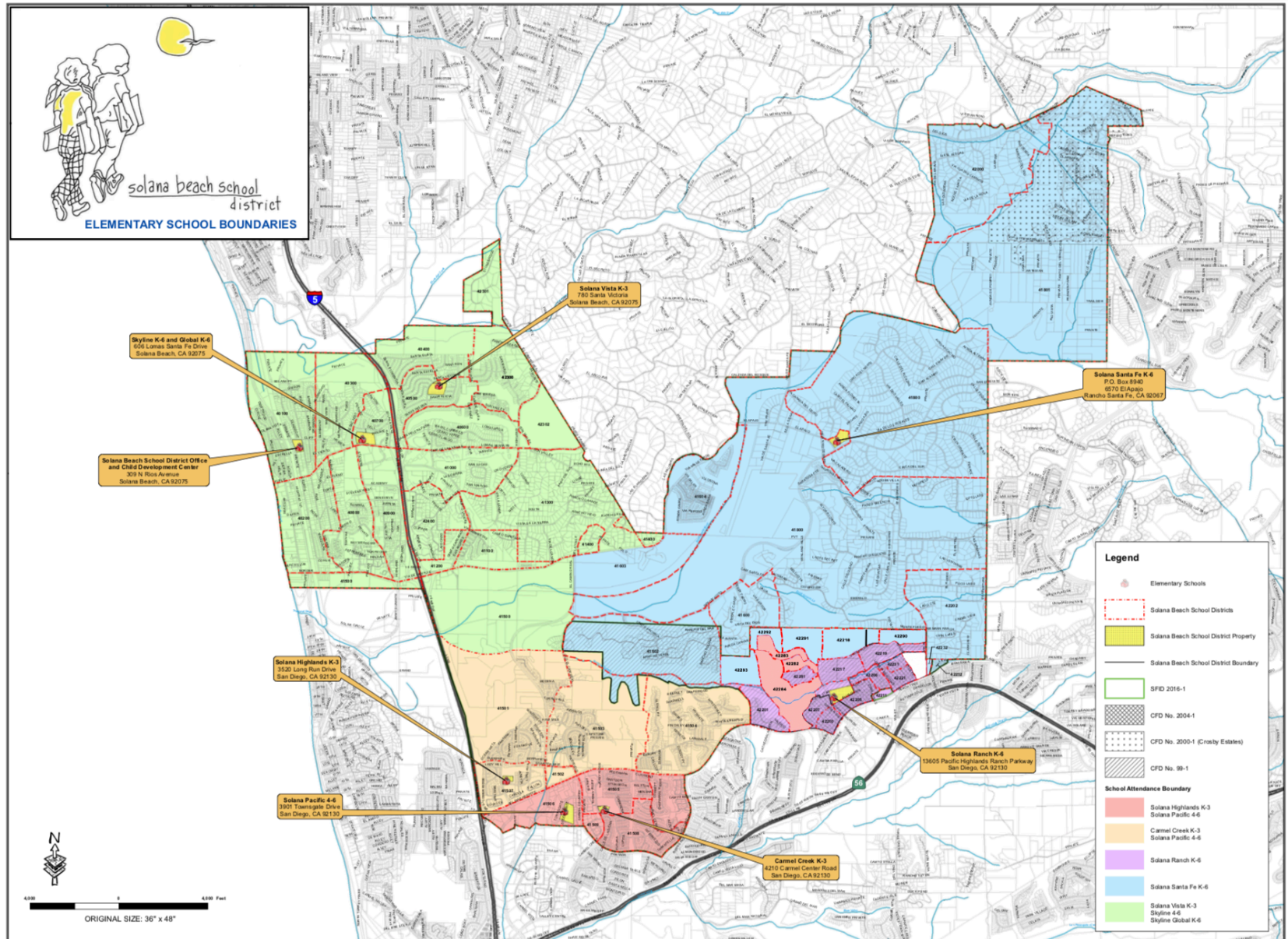


Solana Beach School District
School Board Meeting
February 13, 2019

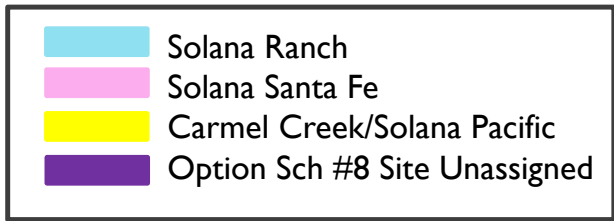
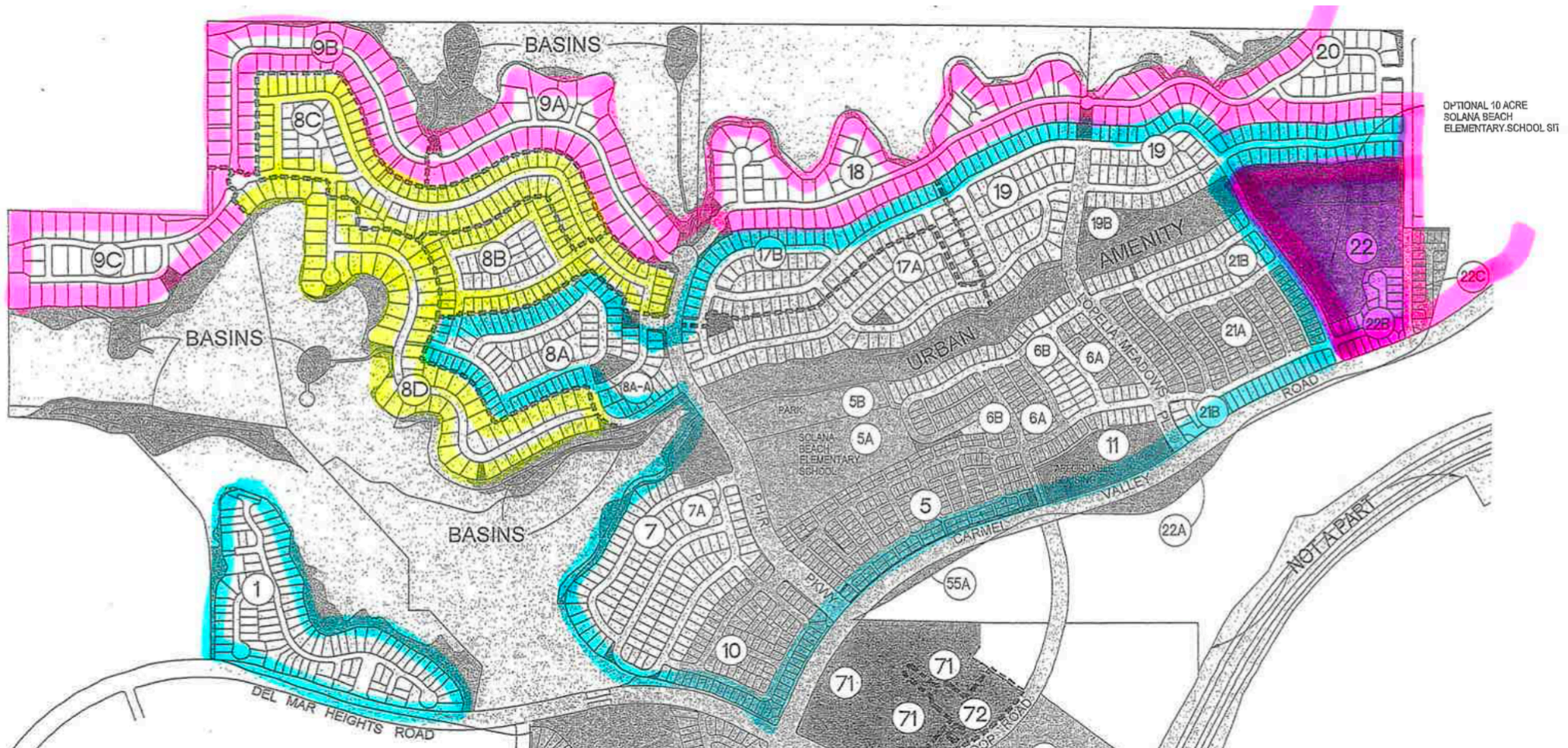


Action Item 7F: Student Attendance Assignments in Pacific Highlands Ranch

DISTRICT BOUNDARY MAP



PACIFIC HIGHLANDS RANCH



2019-2020 PRELIMINARY PROJECTIONS

Solana Ranch Conservative:

Solana Ranch

Grade	2015	2016	2017	2018	2019	2020	2021	2022	2023	2024	2025	2026	2027	2028
K	77	58	76	53	62	68	71	71	70	69	68	67	66	65
1	78	88	64	84	61	69	73	74	74	73	72	70	69	68
2	68	81	87	63	89	65	71	73	74	74	73	72	70	69
3	89	78	84	92	68	94	67	71	73	74	74	73	72	70
4	61	89	76	95	97	74	96	70	74	76	77	77	76	74
5	71	73	94	81	100	102	76	96	70	74	76	77	77	76
6	84	82	74	103	85	104	104	76	96	70	74	76	77	77
Subtotals:	528	549	555	571	562	576	558	531	531	510	514	512	507	499
Pct Chg:	0%	4%	1.1%	2.9%	-1.6%	2.5%	-3.1%	-4.8%	0%	-4%	0.8%	-0.4%	-1%	-1.6%
SDC:	1	1	2	1	1	1	1	1	1	1	1	1	1	1
Totals:	529	550	557	572	563	577	559	532	532	511	515	513	508	500

Estimated Schedule:

- Complete Construction of School #8
- Or Complete Expansion of Solana Ranch

2019-2020 PRELIMINARY PROJECTIONS

Solana Ranch Moderate:

Solana Ranch

Grade	2015	2016	2017	2018	2019	2020	2021	2022	2023	2024	2025	2026	2027	2028
K	77	58	76	53	68	73	76	76	75	75	74	73	73	72
1	78	88	64	84	64	72	76	78	78	78	77	76	76	75
2	68	81	87	63	93	67	73	76	78	78	78	77	76	76
3	89	78	84	92	72	96	68	73	76	78	78	78	77	76
4	61	89	76	95	101	75	96	70	76	79	81	81	80	80
5	71	73	94	81	103	104	76	96	70	76	79	81	81	80
6	84	82	74	103	88	105	104	76	96	70	76	79	81	81
Subtotals:	528	549	555	571	589	592	569	545	549	534	543	545	544	540
Pct Chg:	0%	4%	1.1%	2.9%	3.2%	0.5%	-3.9%	-4.2%	0.7%	-2.7%	1.7%	0.4%	-0.2%	-0.7%
SDC:	1	1	2	1	1	1	1	1	1	1	1	1	1	1
Totals:	529	550	557	572	590	593	570	546	550	535	544	546	545	541

Estimated Schedule:

- Complete Construction of School #8
- Or Complete Expansion of Solana Ranch

IMPACTS FROM RESIDENTIAL DEVELOPMENT

Evaluating Open Seats

- Open seats among the closest existing school sites in the Pacific Highlands Ranch region:

School		Current			Possible Expansion		Maximum	
		2018-19	Capacity	Open Seats	*Additional Classrooms	Additional Capacity	New Capacity	New Open Seats
Solana Santa Fe	K-6	311	414	103	2	46	460	149
Carmel Creek	K-3	350	480	130	0	0	480	130
Solana Pacific	4-6	532	621	89	2	54	675	143
Solana Highlands	K-3	304	500	196	0	0	500	196
<i>Total</i>		<i>1497</i>	<i>2015</i>	<i>518</i>	<i>4</i>	<i>100</i>	<i>2115</i>	<i>618</i>

* Adjusted multiplier based on grade configuration at the site:

- K-3 = 20
- K-6 = 23
- 4-6 = 27

515 new homes in PHR are currently assigned to existing campuses. This equates to needing 250 seats.

STAFF RECOMMENDATION

- Retaining student attendance assignments
- Utilizing available open seats to accommodate students
- Return in October 2019 to develop criteria for how and when housing developments in Pacific Pacific Highlands Ranch will be assigned to attend Solana ranch in the future